

# WEL COME

## S.K. ENTERPRISES

GAT NO 1551, SHELAR WASTHI, CHIKHLI, PUNE 412114

### Company History

#### **Santosh Sarang - Proprietor**

**2006 - Mr. Santosh K Sarang, a Graduate Mechanical Engineer of 1997 batch, after gaining hard-core working experience & exposure in designing & manufacturing cutting tools for nearly 10 years, started SKE, manufacturing & supplying cutting tools, independently in 2006.**

**Keeping pace with the growing volume for critical and quality tools, SKE continued expanding production capacities & capabilities by adding following high-tech machines -**

**2008 – 6 Axis Tool & Cutter Grinder**

**2010 – Cutting Tools Scanning machine**

**2013 – CNC turning center**

**2014 – VMC 4 Axis**

---

**2016 – VMC 3+2 Axis**

**2019 – 5 Axis CNC Tool & Cutter**

**2023 – Started Component Machining Unit.**

**Today SKE is established in a 15000+ Sq ft covered space, with 35+ hi-tech new machines & 70+ workforce to grow as a team.**

**Appreciating strong control over consistent quality & timely deliveries, customers kept encouraging, guiding & supporting SKE in its journey towards continuous improvement & growth.**

# KEY MACHINES

## ACCURATE – CMM



## BFW – VMC 5 AXIS



# MANUFACTURING SETUP



BATLIBOI – VMC 4 AXIS



ACE MICROMATIC – CNC TURNING

# HITACHI SEIKI



# YAM CNC TURNING

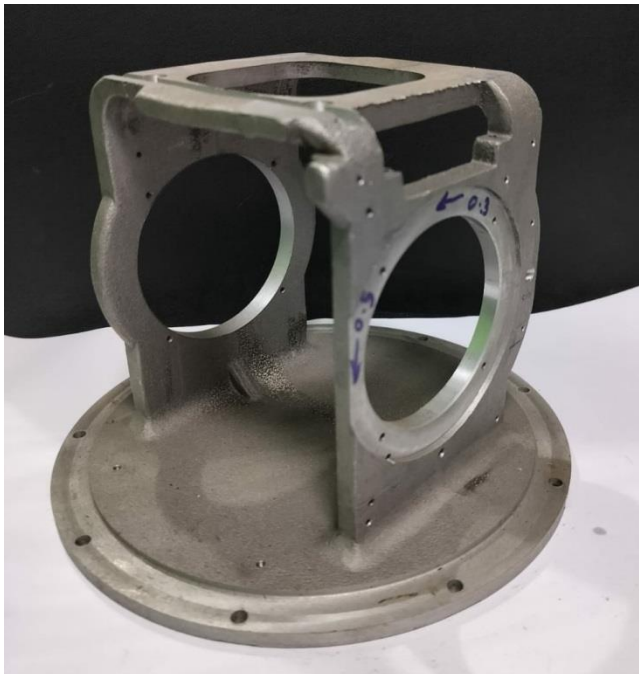
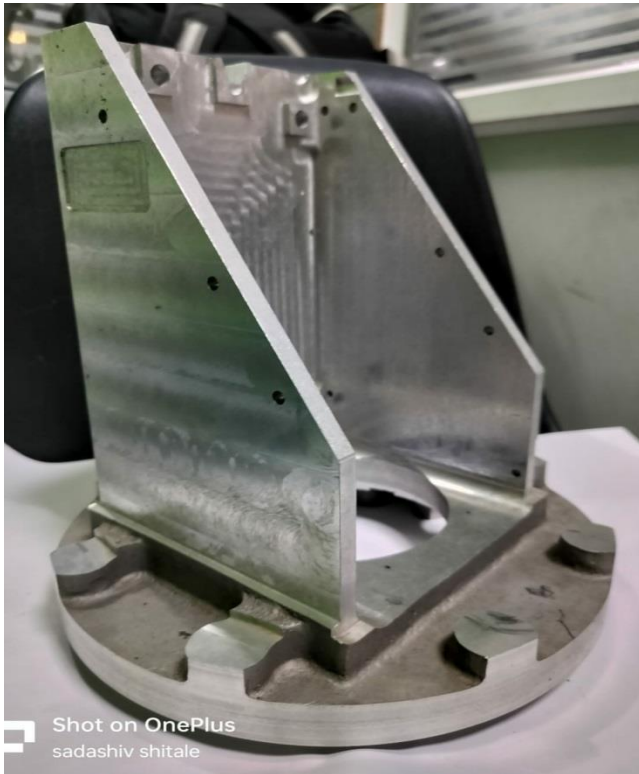




## MICROMATIC JOBBER AXEL



# PRODUCED COMPONENTS





OnePlus  
hitale







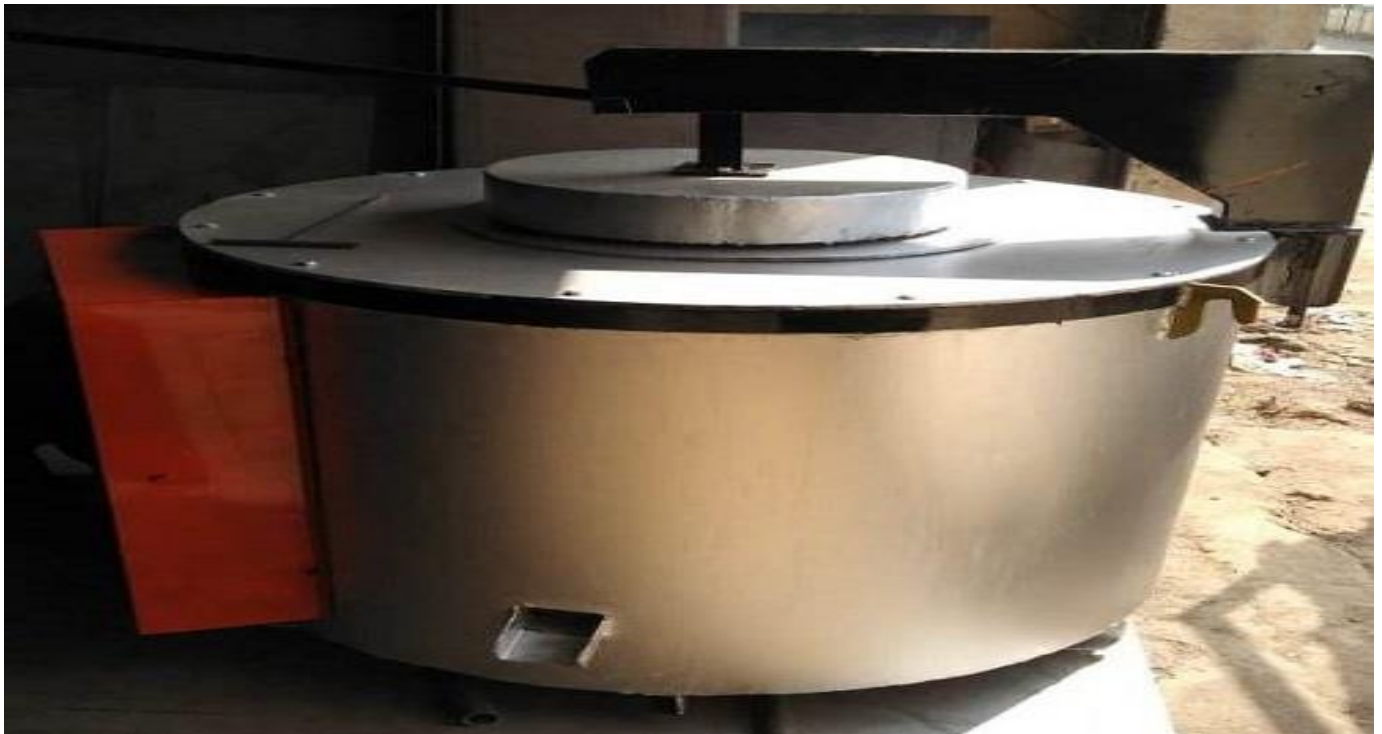


ALUMINIUM DIE CASTING TILTING MACHINE





## PORING FURNACE



# CASTING COMPONENTS

